
Chapter 9. Parts Catalog

Service replacement parts must be ordered by their part numbers. This chapter contains the part numbers for all available replacement parts for the basic 7588 Industrial Computer. For those adapters, drives, and other optional features not listed, the part number should be obtained from the actual component or from the feature kit in which it was provided.

Unless otherwise indicated, part numbers apply to all models.

IBM Service Parts Warranty

For IBM service parts warranty information, see "Statement of Limited Warranty" on page iv.

Electrical and Electronic

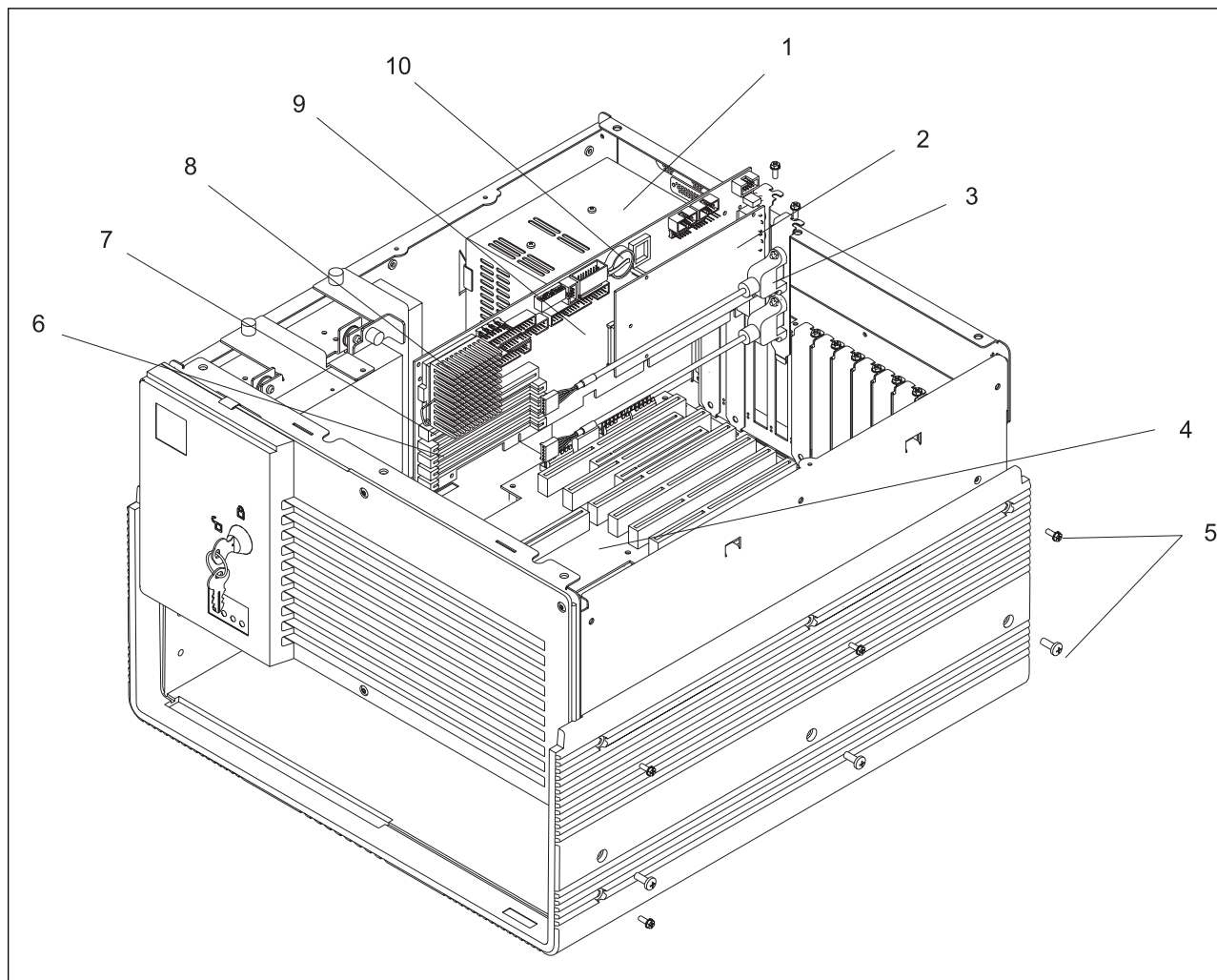


Figure 9-1. Electrical and Electronic

<i>Table 9-1. Electrical and Electronic</i>		
Index	Part Number	Description
1	40H7566 02K1377	Power supply 250 Watt 110/220 V ac Power supply -48 V dc
2	76H4383	Analog Video PMC Form Factor Card
Not shown	76H5374 76H4379	PMC video card mounting (for SBC without Ethernet) PMC video card mounting (for SBC with Ethernet)
3	02K3668	USB cable assembly (for the part numbers of other cables, see Table 9-6 on page 9-9)
4	76H4355 12J2727	Backplane, 7588-001 (12 ISA, 2 PCI—2 shared) Backplane, 7588-101 (7 ISA, 8 PCI—3 shared)
5	12J2739	Mounting screws (contained in miscellaneous package)
6	76H4386 76H4387 76H4388 76H4389 20L2651	4 MB memory SIMM, 60-ns EDO, parity, gold tab 8 MB memory SIMM, 60-ns EDO, parity, gold tab 16 MB memory SIMM, 60-ns EDO, parity, gold tab 32 MB memory SIMM, 60-ns EDO, parity, gold tab 64 MB memory SIMM, 60-ns EDO, parity, gold tab
7	76H4390 76H4391	256 KB cache memory module 512 KB cache memory module
8	76H4380 76H4381 76H4382 02K1879 20L2599 20L2695	Processor (includes heat sink and clip) 100 MHz Pentium 133 MHz Pentium 166 MHz Pentium 200 MHz Pentium 233 MHz Pentium with MMX (586U and 586EU SBCs only) 300 MHz AMD K6-2 (586U and 586EU SBCs only—see Table 6-6 on page 6-17 for restrictions)
9	76H4841 76H4378 20L2597 20L2596	IBM 586 SBC (without Ethernet) IBM 586E SBC (with Ethernet) IBM 586U SBC (without Ethernet) IBM 586EU SBC (with Ethernet)
10	33F8354	Memory-backup battery (lithium)
Not shown	76H4385	Remote-IPL kit (for SBC with Ethernet only)
Not shown	06H4247	Card hold-down spacers

Removable Media Drives

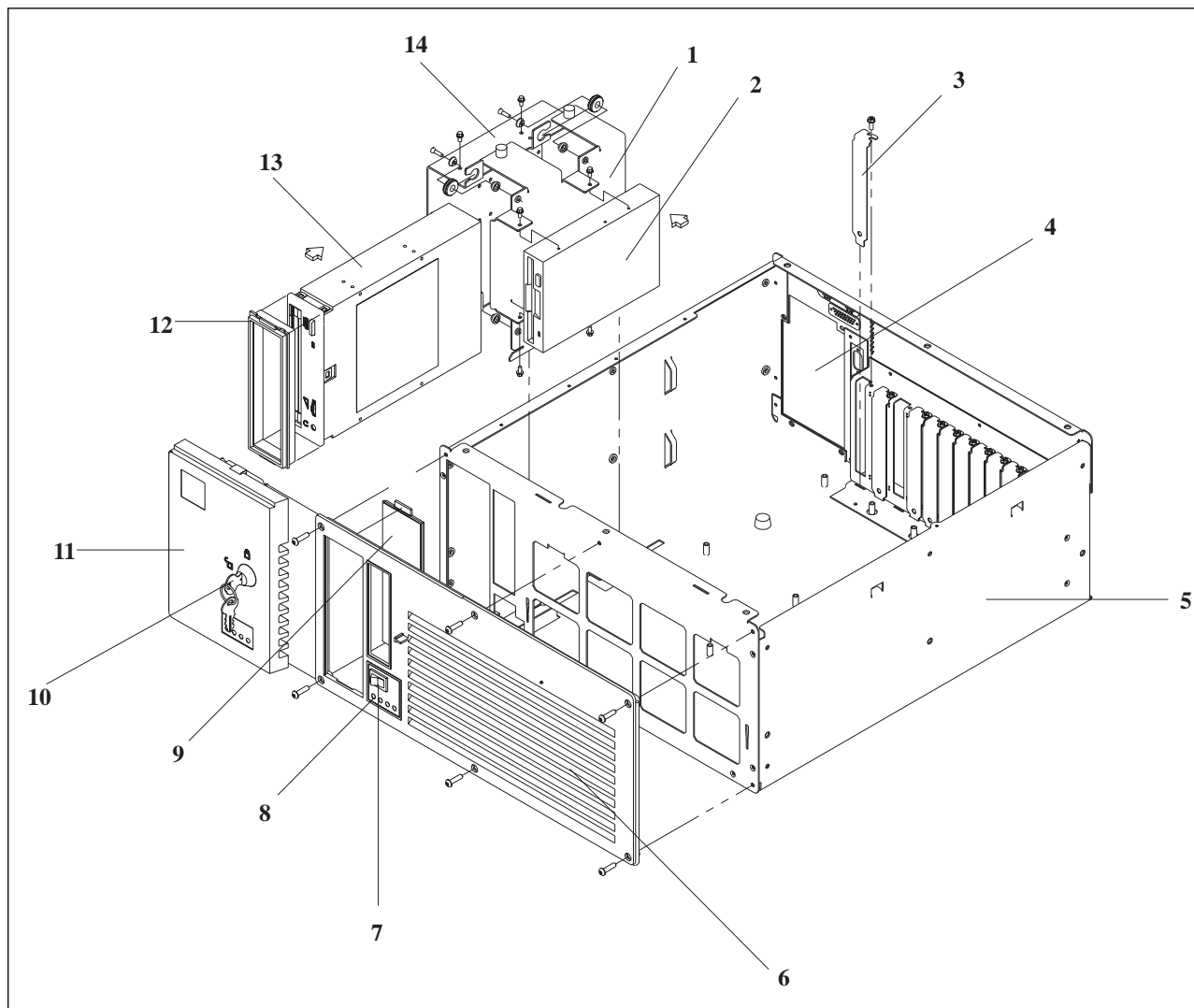


Figure 9-2. Removable Media Drives

Table 9-2. Removable Media Drives

Index	Part Number	Description
1	76H4364	Diskette drive mounting bracket
2	93F2361 76H4091	1.44 MB diskette drive, white bezel 1.44 MB diskette drive, black bezel
3	12J2739	ISA filler panel (four included in miscellaneous parts package)
4	76H6809	Power supply cover (actual cover not shown)
5	76H4361	Chassis
6	76H5765 76H4356	Front bezel kit (contains On/Off switch, LED board, icon/label, six screws) Black Gray
7	06H4268	On/Off switch
8	76H5682	LED board
9	76H6813	5.25-inch filler panel (contains one black and one gray)
10	33F4822	Lock kit with keys
11	76H5766 76H5681	Sliding door (with lock and icon/label) Black Gray
12	06H4246	CD-ROM drive mounting bezel
13	02K1127 02K1113 28L1637	16xMAX CD-ROM drive, white face 24xMAX CD-ROM drive, white face 32xMAX CD-ROM drive, black face
14	76H4365	CD-ROM drive mounting bracket
Not shown	12J2739	Rubber foot (included in miscellaneous package)

Fans and Filters

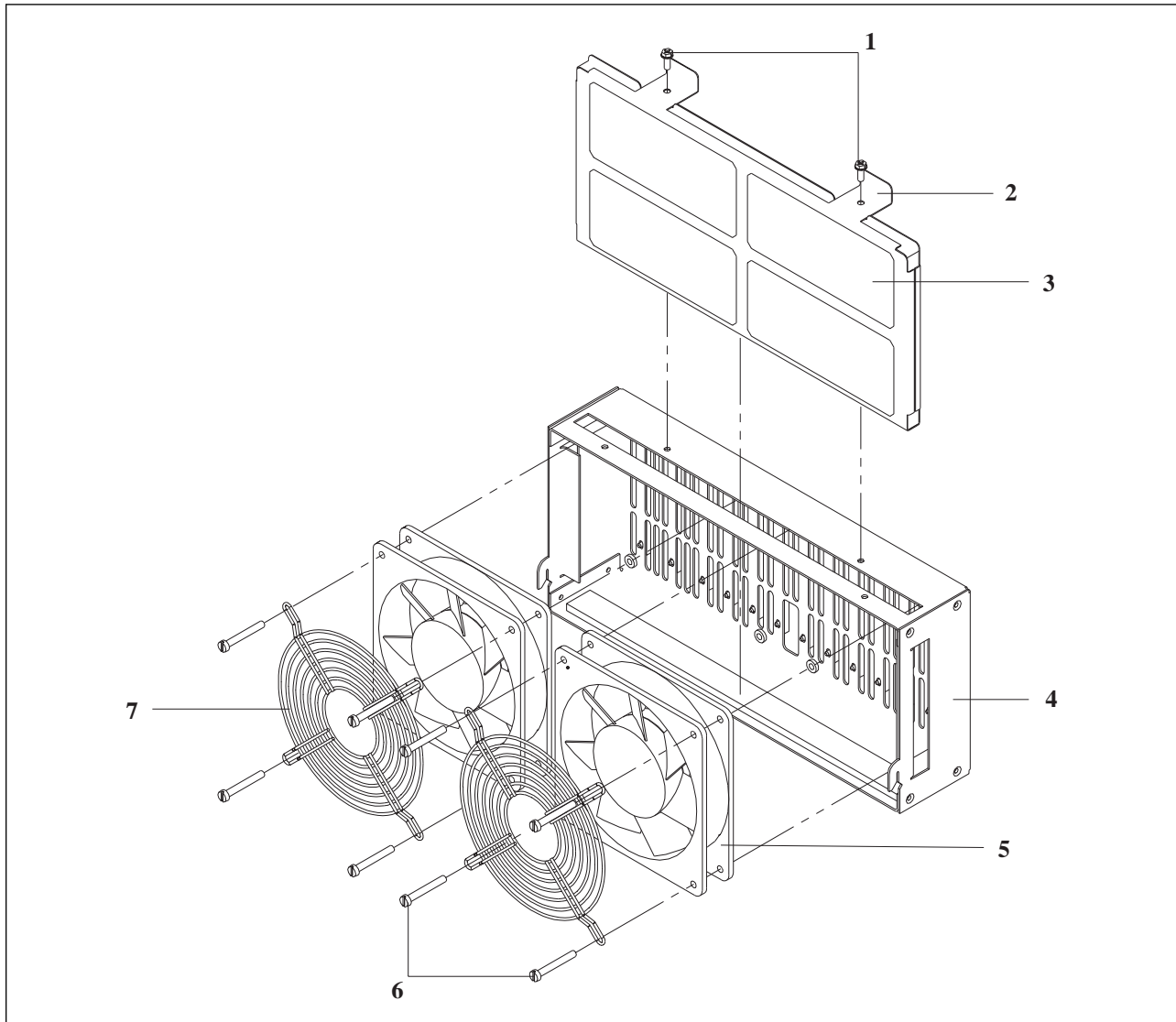


Figure 9-3. Fans and Filters

Table 9-3. Fans and Filters

Index	Part Number	Description
1	12J2739	Mounting screws (included in miscellaneous package)
2	76H5679	Filter bracket
3	76H5678	Filter element (contains three filters)
4	76H5677	Fan bracket
5	06H4283	Fan assembly
6	12J2739	Mounting screws (included in miscellaneous package)
7	06H4971	Fan guard
Not shown	12J2736	3.3 V power card (7588-101)

Hard Disk Drives and Covers

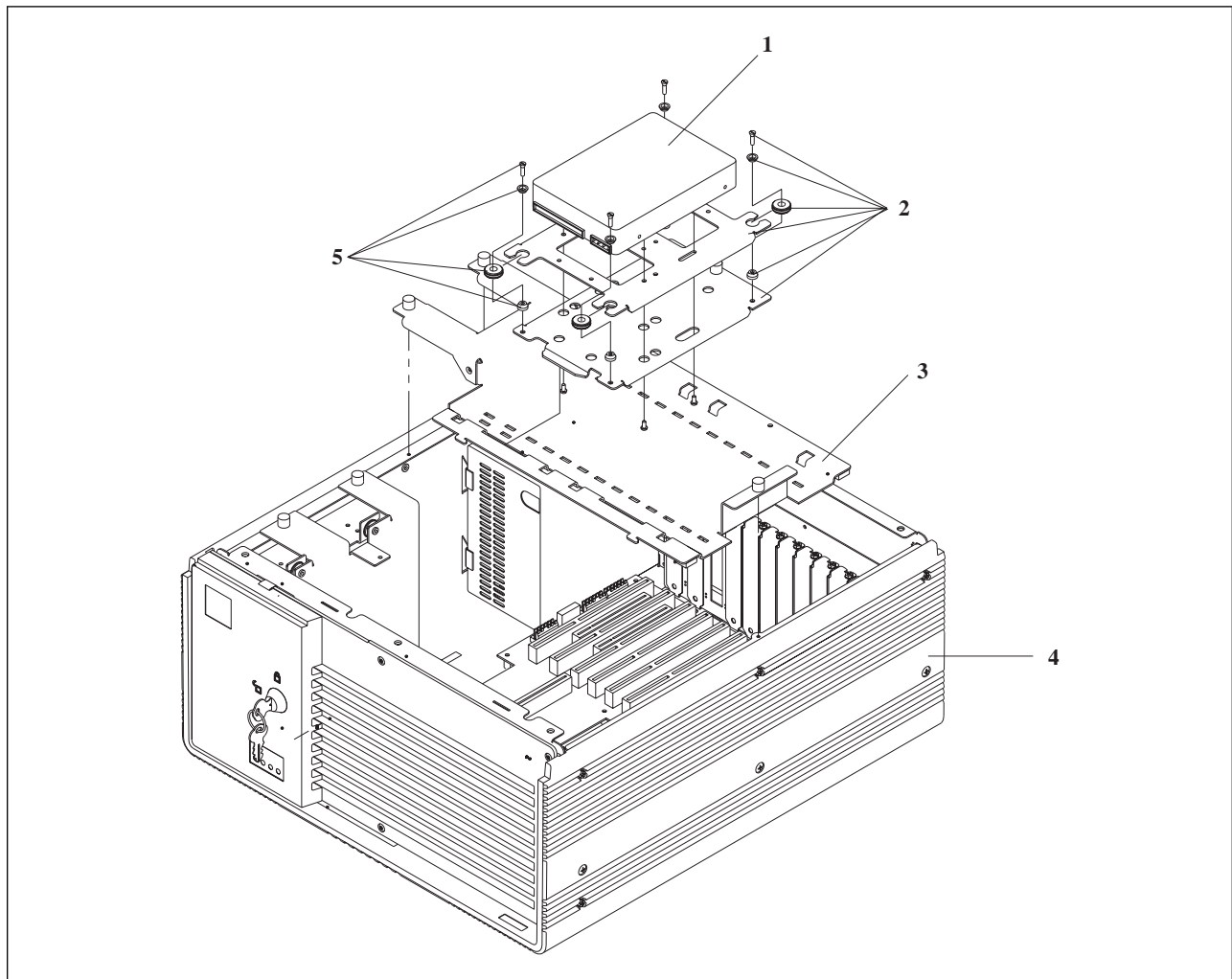


Figure 9-4. Hard Disk Drives and Covers

Table 9-4. Hard Disk Drive and Covers

Index	Part Number	Description
1	42H1816 75H7497 76H4608 12J3143 02K3402	Hard disk drives, IDE 850 MB drive 1.6 GB drive 3.2 GB drive 4.2 GB drive 8.4 GB drive
2	76H4357	Hard disk shock mount assembly (includes four shock mounts and two plates)
3	76H4360	Mounting bracket
4	76H5680 76H4359	Cover set Black Gray
5	78H5498	Shock mount kit (includes four shock mounts)

Rack-Mount, Floor-Stand, and Panel-Mount Kits

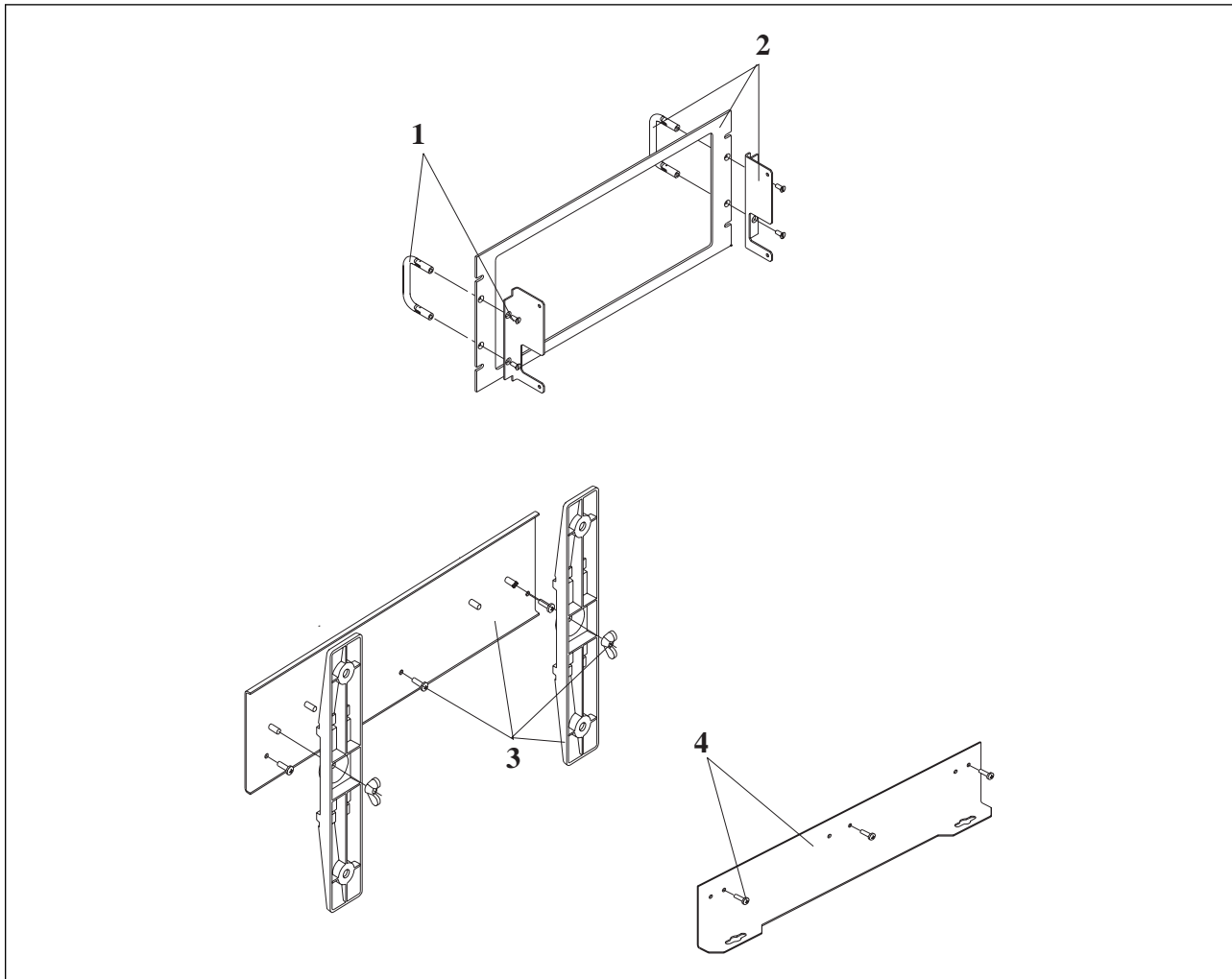


Figure 9-5. Panel-Mount and Floor-Stand Kits

Table 9-5. Panel-Mount and Floor-Stand Kits

Index	Part Number	Description
1	04G2083	Rack-mount handles (includes two handles and four screws)
2	76H5697	Rack-mount kit (includes one plate, two handles, four screws, and two mounting brackets in gray only)
3	76H5704 76H5696	Floor-stand kit (includes two feet, two wing nuts, three mounting screws, one plate, and one logo) black gray
4	76H5698	Panel-mount bracket (includes two brackets and six screws in gray only)

Cables

Table 9-6. Cables

Part Number	Description
78H5486	SBC to LED board cable
78H5487	SBC to backplane J18 cable
76H4363	SBC to diskette drive cable
76H4362	SBC to hard drive cable
78H5500	SBC to external serial port cable
78H5501	SBC to external parallel port cable, 7588-001 (12 ISA, 2 PCI)
02K1386	SBC to external parallel port cable, 7588-101 (7 ISA, 8 PCI)
76H6810	SBC to external keyboard/mouse connector cable
76H4384	SBC-to-PMC keyboard/mouse cable
02K3668	SBC to external USB port cable (includes the bracket and both cables)

Mouse

Table 9-7. Enhanced Mouse

Part Number	Description
06H4595	Enhanced Mouse II

Keyboards

Note: Keyboards do not include the keyboard cable, unless otherwise indicated.

Table 9-8. Enhanced Industrial Keyboards (101 and 102 keys)

Part Number	Description
1394976	French (ID 189)
1394978	German
1394979	Italian (ID 141)
1394972	U.S. English

Table 9-9. Keyboards with TrackPoint® II

Part Number	Description
06H4842	Enhanced, U.S. English (includes cable)
10L6222	Quiet Touch SS Keyboard, U.S. English

Table 9-10. Keyboard Cable

Part Number	Description
72X8537	Keyboard cable

Power Cords

This product is equipped with a 3-wire power cord and plug for the user's safety. Use this power cord in conjunction with a properly grounded electrical outlet to avoid electrical shock.

Table 9-11 (Page 1 of 2). Power Cords

Part Number	Description	Part Number	Description
13F9979	Afghanistan	13F9979	Lebanon
13F9979	Angola	62X1045	Liberia
14F0033	Antigua	14F0069	Libya
72X8508	Argentina	13F9979	Luxembourg
72X8508	Australia	14F0033	Malaysia
13F9979	Austria	14F0033	Malawi
62X1045	Bahamas	14F0033	Malta
14F0033	Bahrain	13F9979	Martinique
14F0015	Bangladesh	13F9979	Mauritius
62X1045	Barbados	62X1045	Mexico
13F9979	Belgium	13F9979	Mozambique
62X1045	Bermuda	14F0033	Nepal
62X1045	Bolivia	13F9979	Netherlands
62X1045	Brazil	62X1045	Netherlands Antilles
14F0033	Brunei	72X8508	New Zealand
13F9979	Bulgaria	62X1045	Nicaragua
14F0015	Burma	14F0033	Nigeria
16F2258	Canada	13F9979	Norway
62X1045	Cayman Islands	14F0033	Oman
14F0069	Chile	14F0015	Pakistan
62X1045	Colombia	62X1045	Panama
62X1045	Costa Rica	72X8508	Paraguay
14F0033	Cyprus	20L2795	Peoples Republic of China
13F9979	Czechoslovakia	62X1045	Peru
13F9997	Denmark	62X1045	Philippines
62X1045	Dominican Republic	13F9979	Poland
14F0033	Dubai (UAE)	13F9979	Portugal
62X1045	Ecuador	14F0033	Qatar
13F9979	Egypt	13F9979	Romania
62X1045	El Salvador	13F9979	Russia
14F0069	Ethiopia	62X1045	Saudi Arabia
13F9979	Finland	14F0033	Sierra Leone
13F9979	France	14F0033	Singapore
13F9979	Germany	14F0033	Somalia
14F0033	Ghana	14F0015	South Africa
13F9979	Greece	13F9979	Spain

Table 9-11 (Page 2 of 2). Power Cords

Part Number	Description	Part Number	Description
62X1045	Guatemala	14F0015	Sri Lanka
62X1045	Guyana	13F9979	Sudan
62X1045	Haiti	62X1045	Surinam
62X1045	Honduras	13F9979	Sweden
13F9979	Hungary	14F0051	Switzerland
14F0033	Hong Kong	13F9979	Syria
13F9979	Iceland	62X1045	Taiwan
14F0033	India	14F0033	Tanzania
13F9979	Indonesia	16F2258	Thailand
13F9979	Iran	62X1045	Trinidad
14F0033	Iraq	13F9979	Turkey
14F0033	Ireland	14F0033	Uganda
14F0087	Israel	14F0033	United Kingdom
14F0069	Italy	62X1045	United States
62X1045	Jamaica	72X8508	Uruguay
62X1045	Japan	62X1045	Venezuela
13F9979	Jordan	13F9979	Zaire
14F0033	Kenya	14F0033	Zambia
62X1045	Korea (South)	13F9979	Zimbabwe
14F0033	Kuwait		

